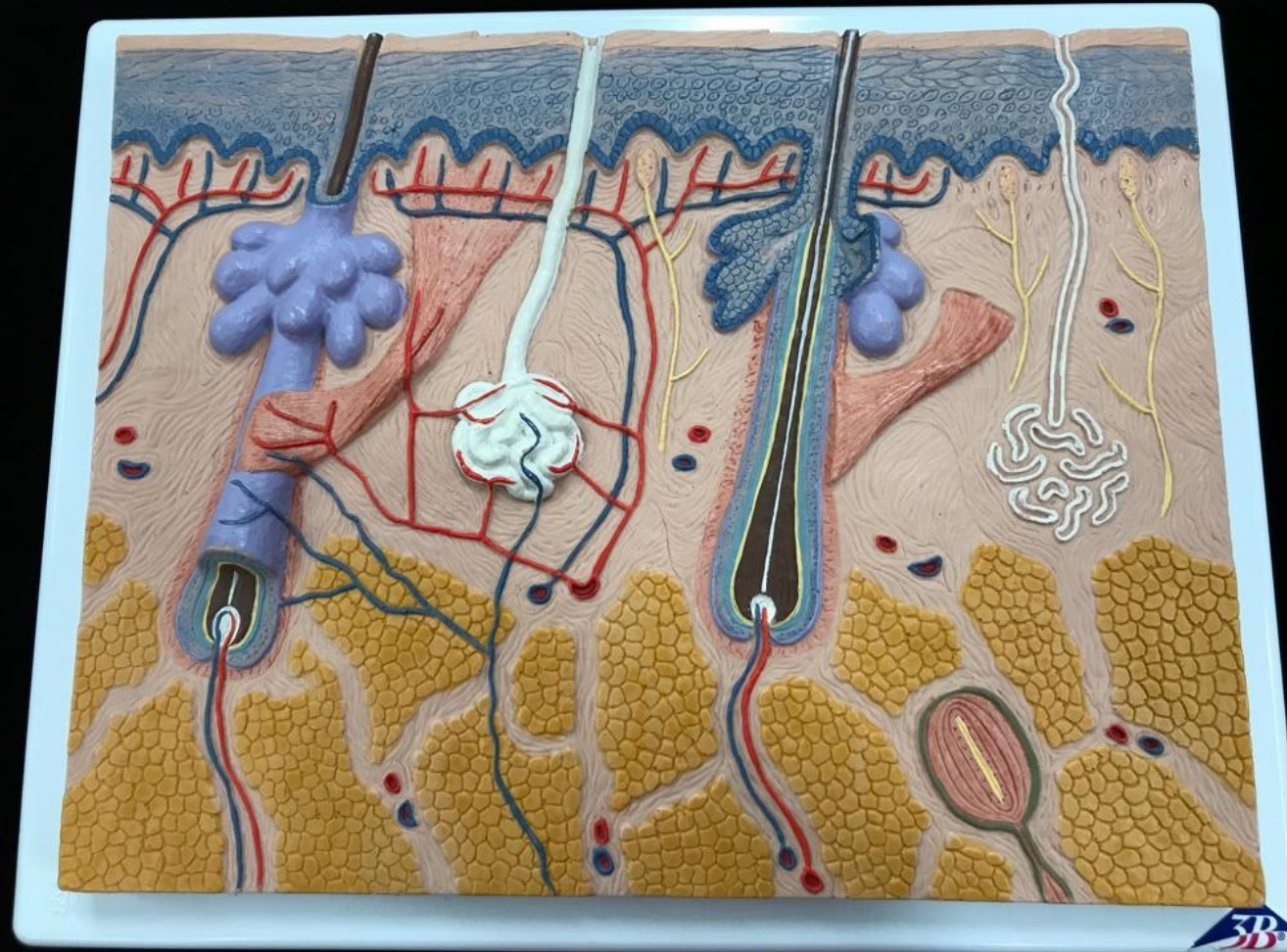


INTEGUMENTARY SYSTEM LAB TERMINOLOGY LIST AND VIDEO RECORDING LINK

Dr. Lisa Brinn

For video recording link of the integumentary plate click [here](#)



- epidermis
 - epidermal layers
 - stratum basale
 - stratum spinosum
 - stratum granulosum
 - stratum corneum
 - dermis
 - dermal papilla
 - papillary layer
 - reticular layer
 - hypodermis
 - adipose cells
- accessory structures
 - sebaceous gland
 - duct of sebaceous gland
 - hair root
 - hair shaft
 - hair papilla
 - sweat gland
 - sweat gland duct
 - sweat gland pore
 - tactile corpuscle or Meissner's corpuscle
 - lamellated corpuscle or Pacini's corpuscle
 - arrector pili muscle